

Data report 2018

Wet deposition monitoring (Preliminary Draft)

STM 20

4-5 September, 2019

Kuala Lumpur in Malaysia



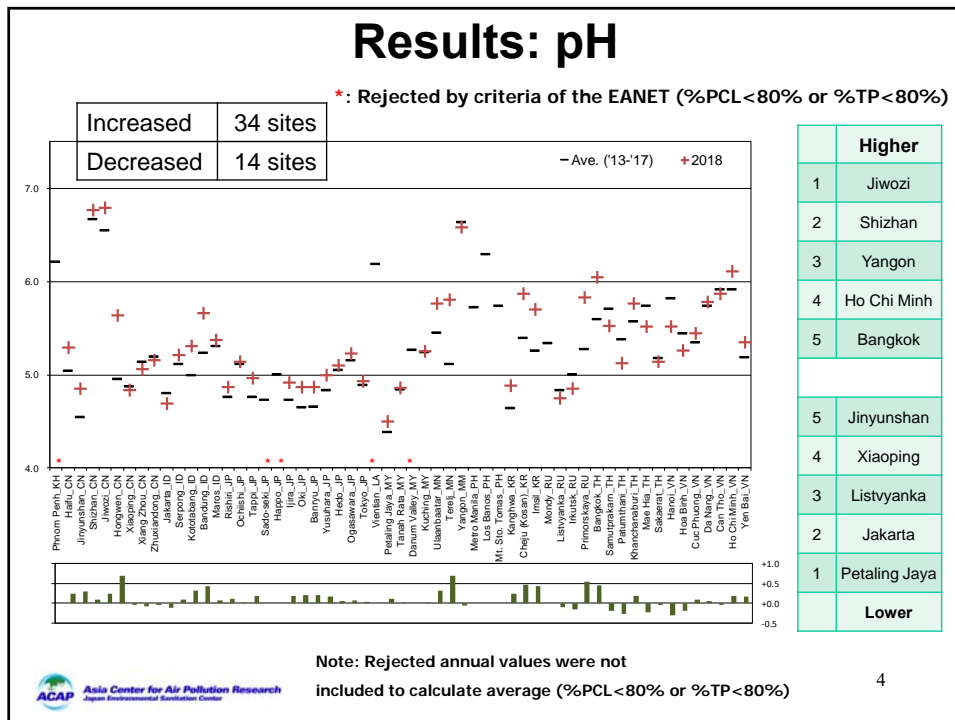
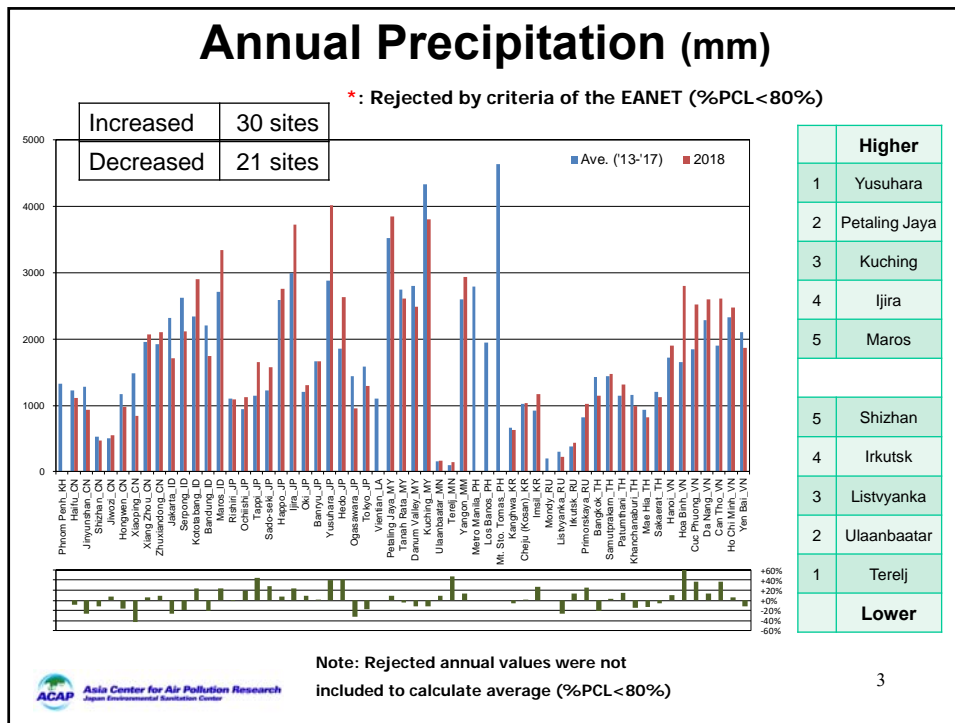
Network Center for the EANET

Monitoring Sites

- Table 3.6
Wet deposition monitoring data of **57 sites** are expected to be submitted to Network Center.

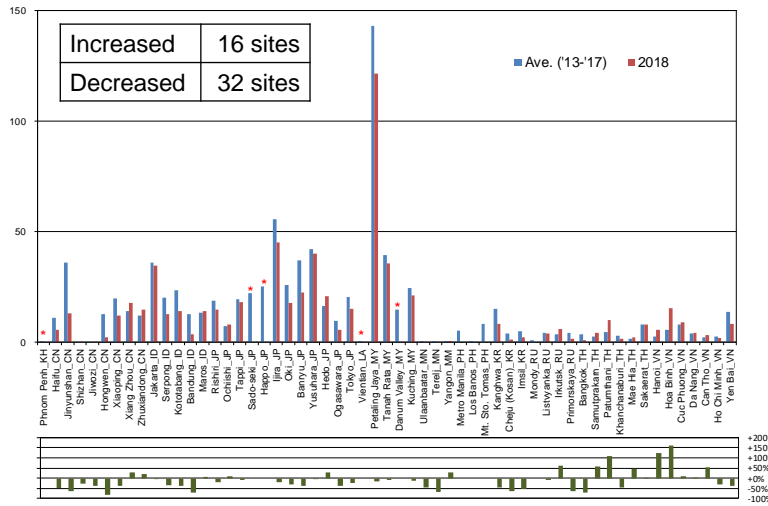
Cambodia	1	Myanmar	1
China	8	Philippines	3
Indonesia	5	Republic of Korea	3
Japan	12	Russia	4
Lao PDR	1	Thailand	6
Malaysia	4	Viet Nam	7
Mongolia	2		





Results: H⁺ depo. (mmol m⁻² y⁻¹)

*: Rejected by criteria of the EANET (%PCL<80% or %TP<80%)

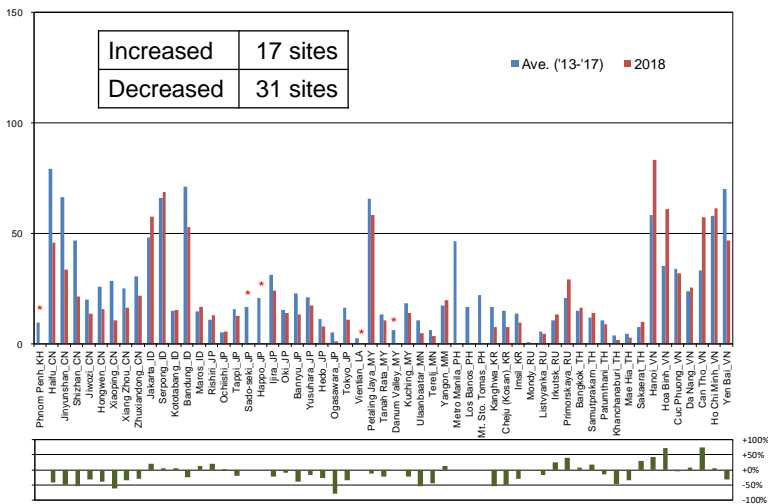


Higher	
1	Petaling Jaya
2	Ijira
3	Yusuhara
4	Tanah Rata
5	Jakarta
5	Yangon
4	Ulaanbaatar
3	Terelj
2	Jiwozi
1	Shizhan
Lower	

Note: Rejected annual values were not included to calculate average (%PCL<80% or %TP<80%)

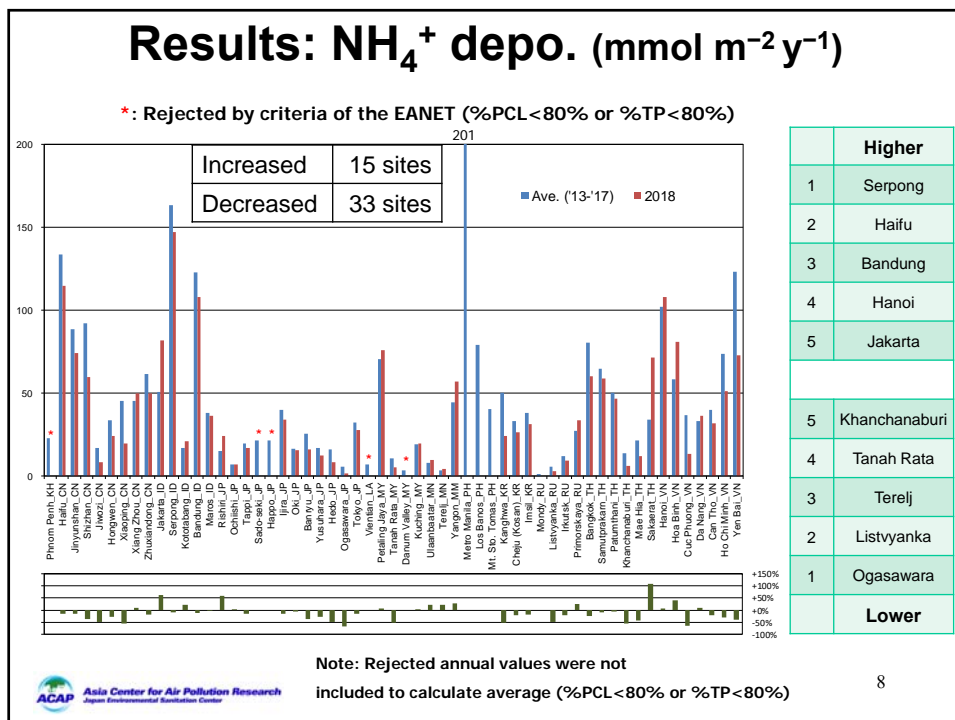
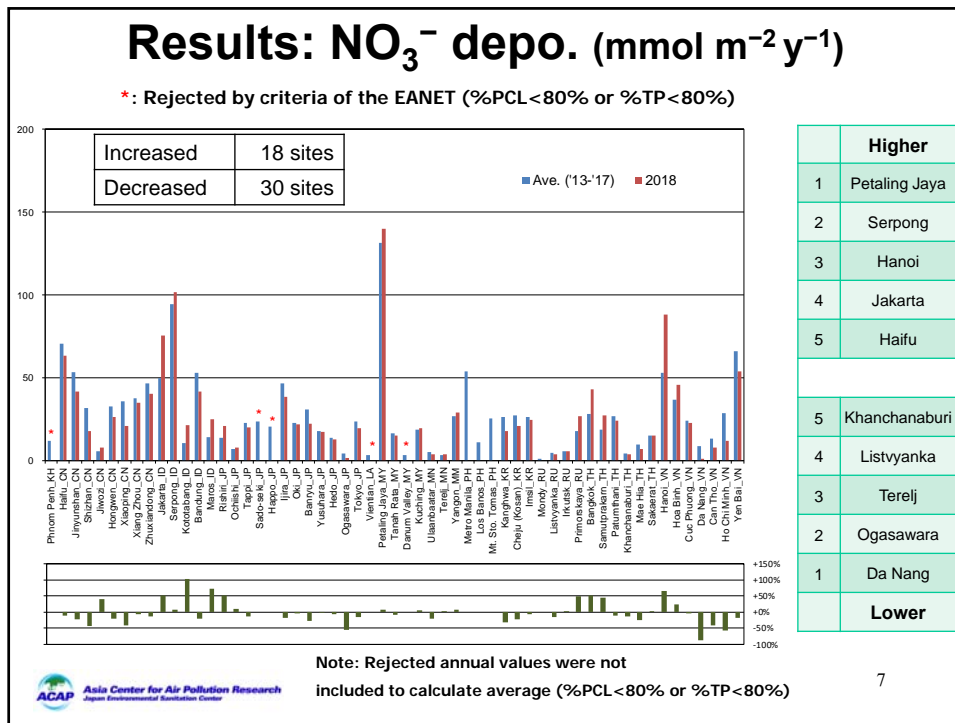
Results: nss-SO₄²⁻ depo. (mmol m⁻² y⁻¹)

*: Rejected by criteria of the EANET (%PCL<80% or %TP<80%)



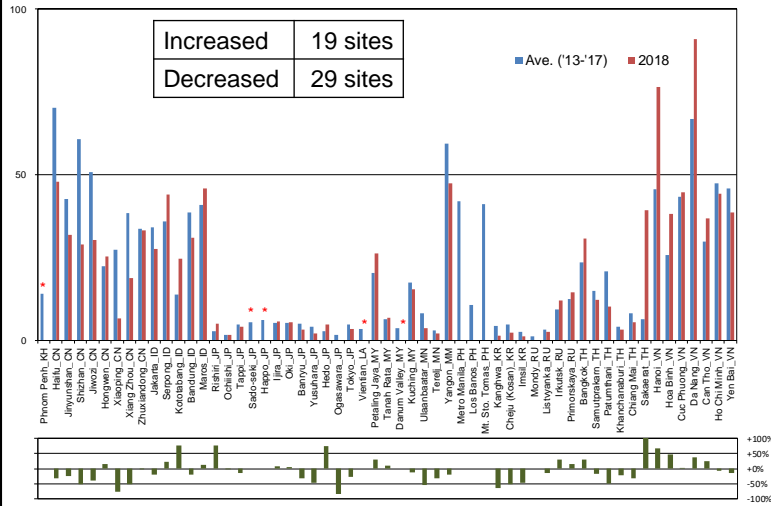
Higher	
1	Hanoi
2	Serpong
3	Ho Chi Minh
4	Hoa Binh
5	Petaling Jaya
5	Listvyanka
4	Terelj
3	Mae Hia
2	Khanchanaburi
1	Ogasawara
Lower	

Note: Rejected annual values were not included to calculate average (%PCL<80% or %TP<80%)



Results: nss-Ca²⁺ depo. (mmol m⁻² y⁻¹)

*: Rejected by criteria of the EANET (%PCL<80% or %TP<80%)



	Higher
1	Da Nang
2	Hanoi
3	Haifu
4	Yangon
5	Maros
5	Terelj
4	Ochiishi
3	Kanghwa
2	Imsil
1	Ogasawara
	Lower

Note: Rejected annual values were not included to calculate average (%PCL<80% or %TP<80%)

Data Submit

The monitoring data on wet deposition of the following sites have not been submitted yet.

Country	Site
Philippines	Metro Manila
	Los Baños
	Mt. Sto. Tomas
Russia	Mondy

Cautionary points of Data Submission

Please be careful in the first period and last period.

Sample No.	Sampling period				SO ₄ ²⁻ µmol L ⁻¹	NO ₃ ⁻ µmol L ⁻¹	Cl ⁻ µmol L ⁻¹	HCO ₃ ⁻ µmol L ⁻¹	F ⁻ µmol L ⁻¹	Br ⁻ µmol L ⁻¹	Date of analysis	Note
	Start	End	Time	Time								
1	2019/1/1	2019/1/2	9:00	9:00								
2	2019/1/2	2019/1/3	9:00	9:00								
3	2019/1/3	2019/1/4	9:00	9:00								
4	2019/1/4	2019/1/5	9:00	9:00								
5	2019/1/5	2019/1/6	9:00	9:00								
6	2019/1/6	2019/1/7	9:00	9:00								
...								
361	2019/12/27	2019/12/28	9:00	9:00								
362	2019/12/28	2019/12/29	9:00	9:00								
363	2019/12/29	2019/12/30	9:00	9:00								
364	2019/12/30	2019/12/31	9:00	9:00								
365	2019/12/31	2020/1/1	9:00	9:00								

If the middle of sampling period is 2019,
the sample is included in 2019 data.

Thank you for your attention.



Asia Center for Air Pollution Research
Japan Environmental Sanitation Center